

ASC chassis

UTLI41

INSULATED

UTLN41

NON-INSULATED

AERIAL SPLICING CHASSIS



Working Height **43' 9" (13.3m)***

Horizontal Reach **25 ft 7 in (7.8 m)***

Basket Capacity **350 lbs (159kg)**

* dimensions vary according to model number and options



SPACIOUS 8' X 10' SPLICING LAB
6 ft X 6 in INTERIOR HEIGHT

**START SPLICING FASTER
ON THE JOB!**

All-in-One Solution
Compact Footprint
Maneuverable in Tight Spaces
Quick Set-Up Time
Security on the Job
Self-Contained Equipment Package
Heavy-Duty Design

HONDA
GENERATORS



1-888-765-3322



Utility Truck Equipment Mfg, L.L.C.
901 Enterprise Blvd
Hewitt, Texas 76643
Phone: 254-857-8204 Fax: 254-857-9253
www.UTEMbuckets.com

ASC chassis

UTLI41

INSULATED

UTLN41

NON-INSULATED

A E R I A L S P L I C I N G C H A S S I S

CHASSIS MINIMUM REQUIREMENTS

GVWR*	19,500 lbs
Front Axle GAWR*	7,000 lbs
Rear Axle GAWR*	14,500 lbs
Approx Weight of Stability	15,520 lbs

POWER SOURCE

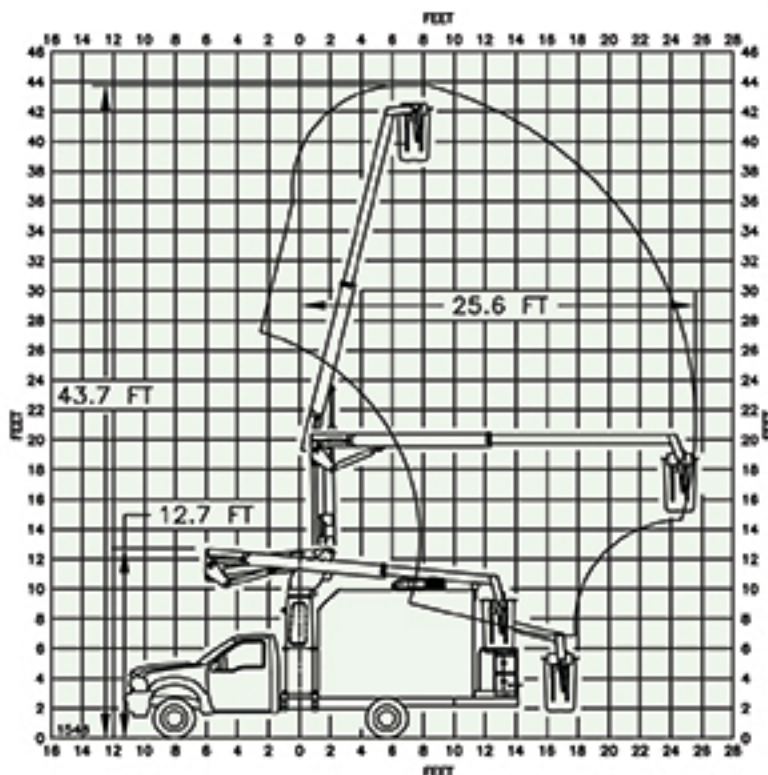
Honda EU7000is
Eco Throttle
Long Run Times
Electric Start
3 Year Warranty

COMPOSITE CHASSIS BODY

Interior space 483 cubic feet
Interior height 6 ft 6 in

AERIAL SPECIFICATIONS

Horizontal Side Reach	25 ft 7 in (7.8 m)
Height Bottom Basket*	38 ft 9 in (11.8 m)
Working Height*	43 ft 9 in (13.3 m)
Stowed Height*	12 ft 9 in (3.9 m)
Std Basket Capacity	350 lbs (159 kg)
540 Degree Rotation	
HE Powered Aerial	
24 VDC Powered Aerial - opt	
Proportional Upper Controls w/Single Handle Actuator	
Emergency Lower 12 VDC	
Side Mounted Walk-Thru Basket w/Door	
Hydraulic Basket Leveling	
Electric Tool Outlet @ Basket (UTLN)	



ISUZU



UTLN41 meets and exceeds ANSI A92.9-2021 & Osha Requirements
* based on 32 in (0.81 m) Chassis Height



1 - 8 8 8 - 7 6 5 - 3 3 2 2



Utility Truck Equipment Mfg L.L.C.
901 Enterprise Blvd
Hewitt, Texas 76643
Phone: 254-857-8204 Fax: 254-857-9253
www.UTEMBuckets.com

THIS DOCUMENT

